

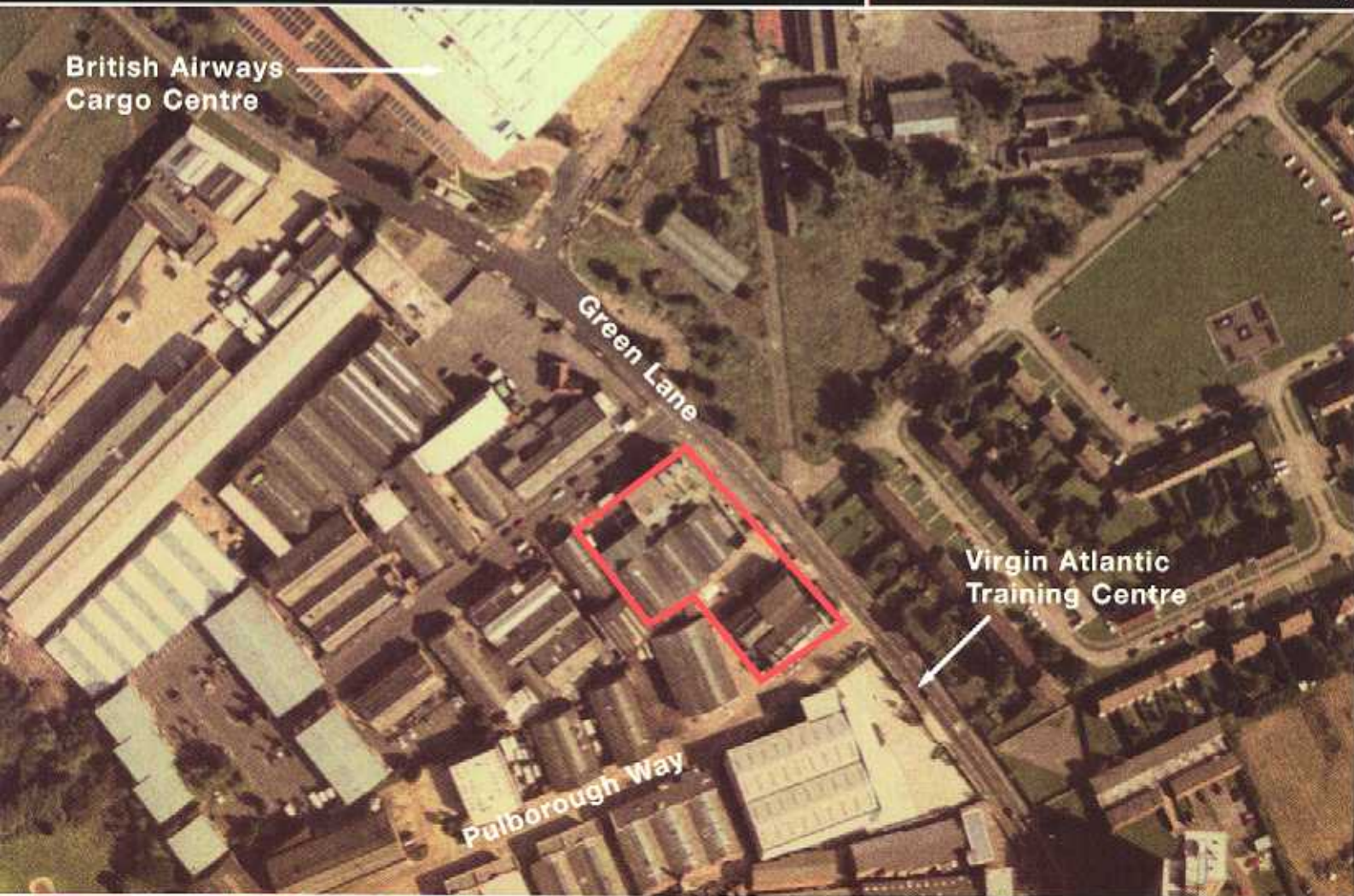
Pre Let

Green Lane

HOUNSLOW

the
LHR
.com

heathrow's business community



**Design & Build
Opportunity**

**Up to 3,715 sq m
(40,000 sq ft)**

Site Available Now

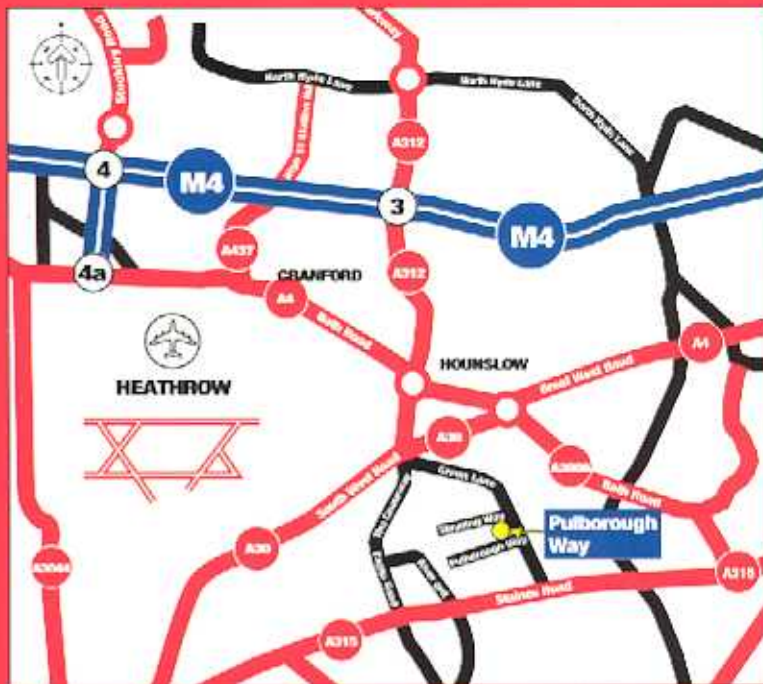


location

The site is located with a prominent frontage to Green Lane in Hounslow.

Hounslow and Feltham town centres are approximately within one mile of the site providing the standard retail and bank facilities.

Junction 3 of the M4 is approximately 3 miles to the North and Junction 1 of the M3 is approximately 3 miles of the South.



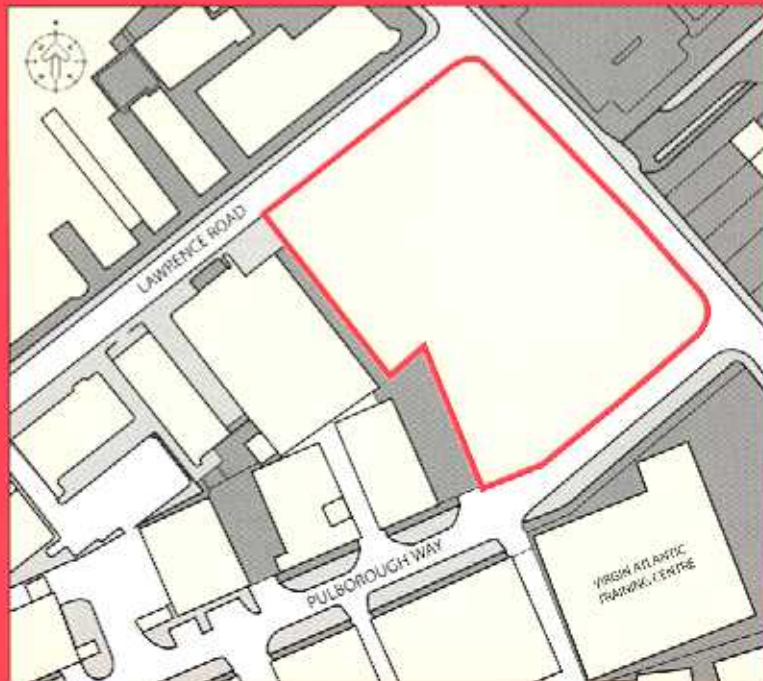
description

The site comprises approximately 2.34 acres.

Subject to planning, the site is capable of accommodating a single facility of up to 3,715 sq m (40,000 sq ft). Indicative sketches can be provided upon request.

indicative specification

The facility will be constructed to the high quality standards of Slough Estates and an indicative specification is available upon request.



Produced by SE International Marketing

terms

Terms available on application from:

Frank De Souza at De Souza & Co. email: frankd@desouza.co.uk or Tunde Adegbemile at DTZ Debenham Tie Leung. email: tunde.adegbemile@dtz.com

www.theLHR.com



Slough Estates supports the Code of Practice for Commercial Leases and is willing to consider a variety of lease terms. These variations may affect the level of rent. These particulars are believed to be correct at publication date but their accuracy is in no way guaranteed, neither do they form part of any contract. 09/05.