

TO LET

INDUSTRIAL/WAREHOUSE UNIT

2,237 sq ft (207.81 sq m) + a small secure yard

Unit 18/24 Phoenix Distribution Park, Phoenix Way, Heston TW5 9NB



Location

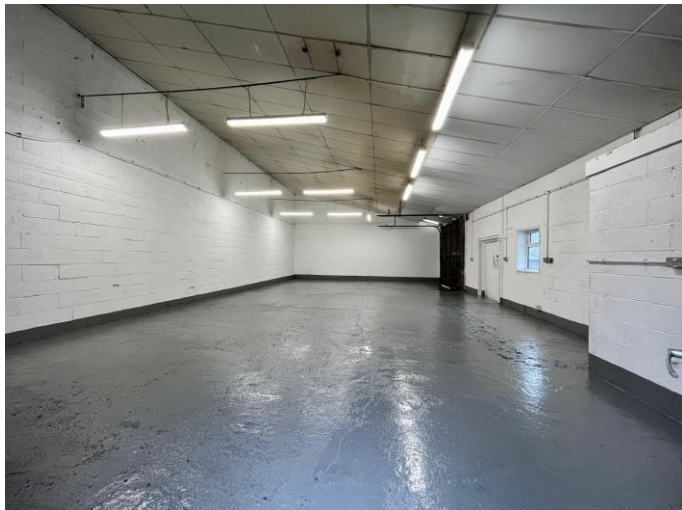
Phoenix Distribution Park is accessed off Cranford Lane and is situated 1 mile from Junction 3 of the M4 and 3 miles from the M25. Heathrow Airport is approximately 2 miles distant and Hounslow Town Centre, which supplies all banking and retail facilities, is approximately 3 miles.

Description

Unit 18/24 provides an end of terrace industrial/warehouse unit with an additional storage building and small self contained yard.

The loading access is via a single electric door at the front of the unit.

The estate also benefits from have 24/7 use and on site security and a caretaker.



Amenities

- End of terrace unit
- 24/7 access
- On site caretaker/night security
- Three phase power
- Two loading doors
- Small self contained yard
- LED lighting throughout
- WC
- EPC rating – upon application

Lease terms:

The unit is available on a new full repairing and insuring lease for a term to be agreed.

Legal Costs:

A reservation deposit of £1000 is required which will hold the unit for 3 weeks whilst the lease is completed.

Landlords Legal Costs:

These will be limited to £500 and the balance will be credited to the rent on completion.

Viewing:

Strictly by appointment only.

Contact:

Simon Cressey
simonc@desouza.co.uk
079393 129427



For more information or to arrange a viewing contact:

Paul Flannery
E: paulf@desouza.co.uk
T: 020 8707 3030
M: 07946 422920

Simon Cressey
E: simonc@desouza.co.uk
T: 020 8707 3030
M: 07939 129427

Heathrow Office: 3 Maple Grove Business Centre, Lawrence Road, Hounslow, Heathrow TW4 6DR

www.desouza.co.uk