

TO LET

MODERN BUSINESS UNITS

2,374 – 4,749 sq ft (221 – 441 sq m)

1 & 2 Maple Grove Business Centre, Lawrence Road, Hounslow TW4 6DR



Location

The premises are located on the Maple Grove Business Centre in Lawrence Road, just off Green Lane, Hounslow. Green Lane connects the A315 (Staines Road) and the A312 (The Causeway).

Heathrow Airport is within 2 miles and connection the motorway network is via the M4 (J3) which is approx. 4 miles or the M3 (J1) which is within 5 miles.



Description

Units 1 and 2 Maple Grove Business Centre provide two modern self contained business premises both of which provide fully fitted offices on the first floor, whilst the ground floors can be used for a variety of uses such as storage, production or additional office space. The ground floor benefits from a floor to ceiling height of 3.3m and a loading door to each unit.

The estate is well maintained and benefits from a security barrier.

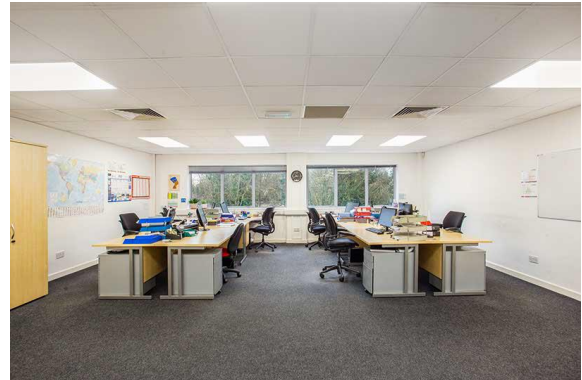
Measurements:

Unit 1: 2,374 sq ft (220.58 sq m)

Unit 2: 2,375 sq ft (220.65 sq m)

Amenities

- Self-contained semi detached units
- Comfort cooling to offices
- One loading door per unit
- Allocated parking
- Lighting throughout
- Fully fitted first floor offices
- Estate security barrier
- EPC rating – upon application



Lease terms: Upon application

Viewing: Strictly by appointment only.

DE SOUZA

For more information or to arrange a viewing contact:

Paul Flannery

E: paulf@desouza.co.uk

T: 020 8707 3030

M: 07946 422920

Simon Cressey

E: simonc@desouza.co.uk

T: 020 8707 3030

M: 07939 129427

Heathrow Office: 3 Maple Grove Business Centre, Lawrence Road, Hounslow, Heathrow TW4 6DR

www.desouza.co.uk