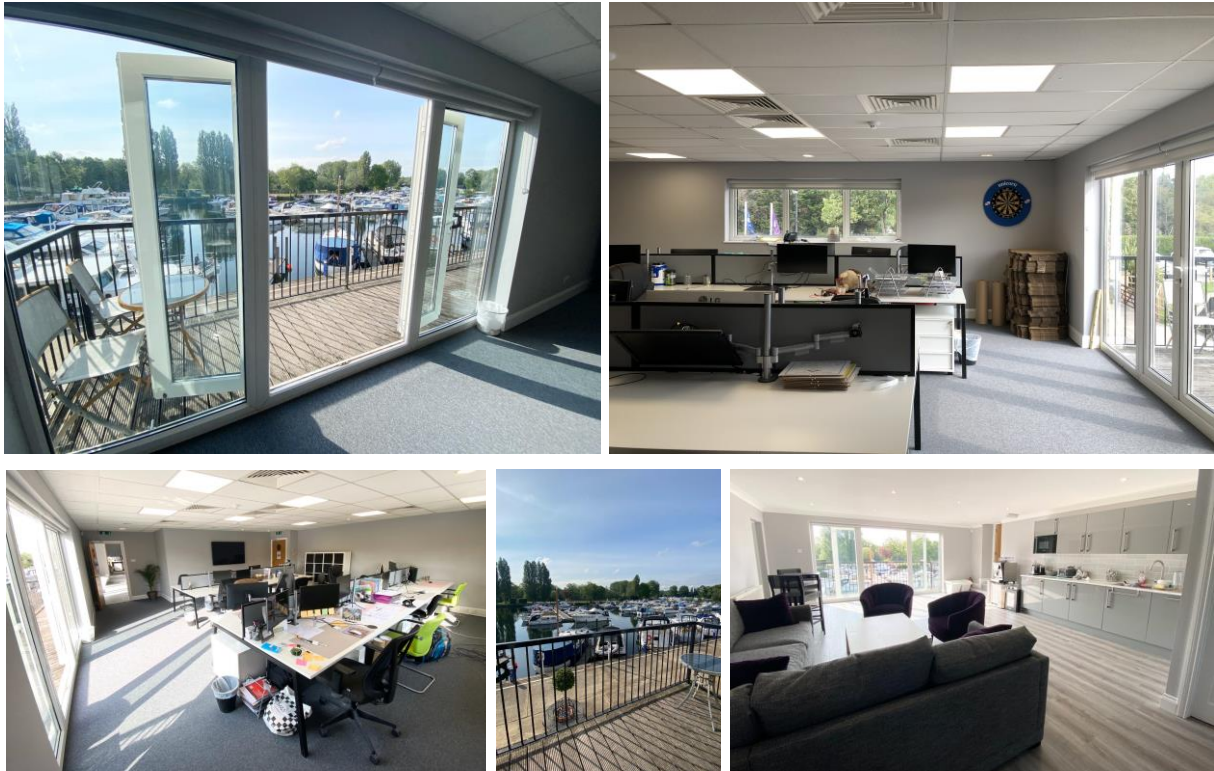


SHEPPERTON MARINA, FELIX LANE, SHEPPERTON TW17 8NS



First Floor Quayside Offices with Balcony

508 sq ft (47.2sq m)

- Fitted and furnished plug and play office suite
- Air-conditioning
- Balcony overlooking marina
- Meeting room available to book (subject to availability)
- Access to shared kitchen area
- Ample on site car parking
- 12 month agreement (subject to the consent of the superior Landlord)
- £1,450 + VAT per month fully inclusive

Contact: Paul Flannery paulf@desouza.co.uk 07946 422920

Tel: 020 8707 3030

www.desouza.co.uk

Heathrow Office: 3 Maple Grove Business Centre, Lawrence Road, Hounslow TW4 6DR

These details are intended as a guide only and must not be relied upon as statements of fact. They are not intended to constitute, nor constitute part of, an offer or contract. All prices and rents quoted are exclusive of VAT unless otherwise stated.