

TO LET Fully Refurbished Office building with outstanding views

6,013 sq ft (559 sq m)

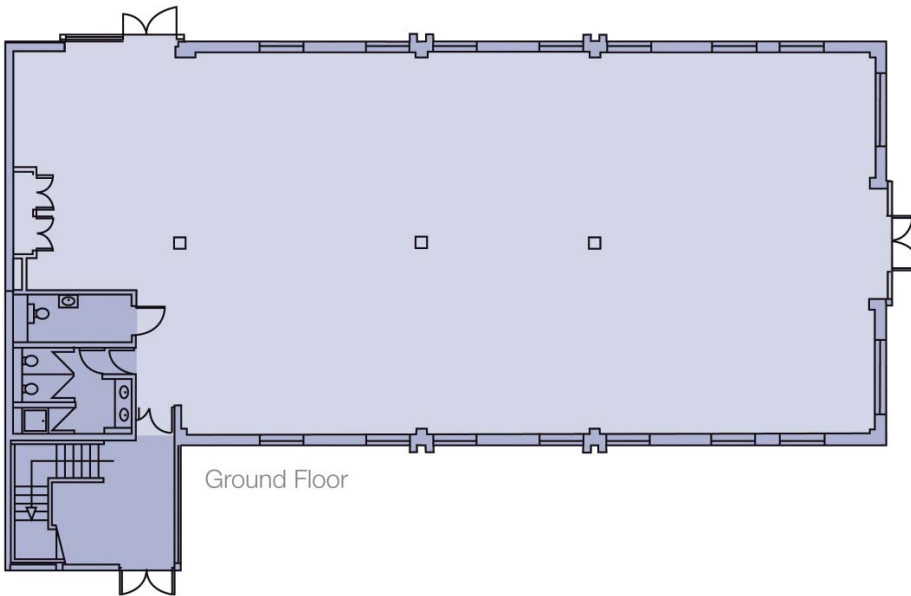
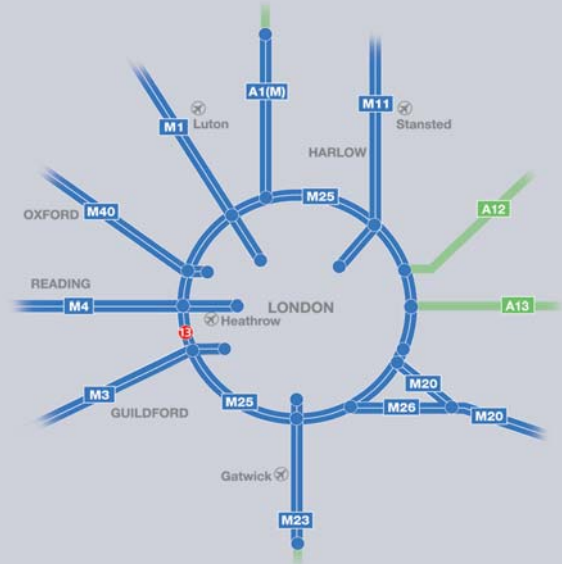
Ground and first* floor, Woolbrook House,
Crabtree Office Village, Eversley Way, Egham TW20 8RY

*First floor tenant vacates Feb 2009

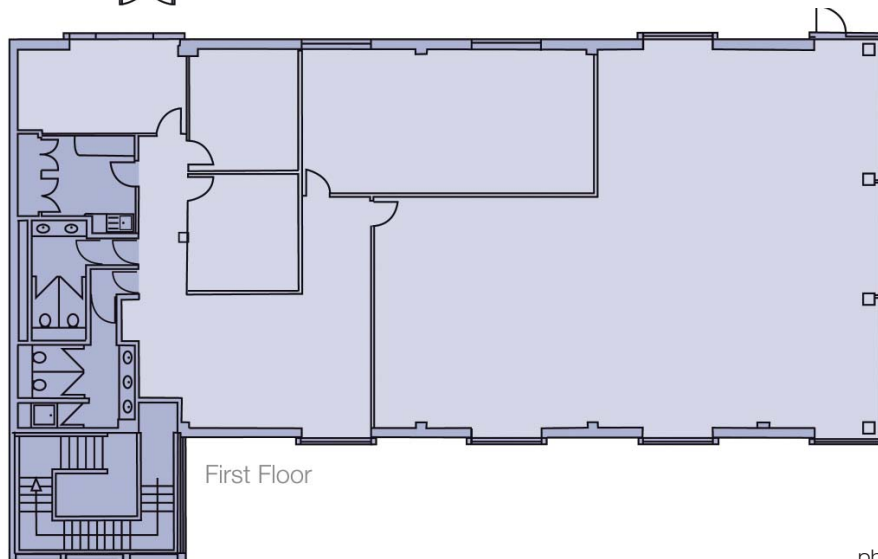




**CRABTREE
OFFICE VILLAGE**
SatNav reference: TW20 8RY



Ground Floor



First Floor

SPECIFICATION

- Air conditioning
- Fully accessed raised floors
- Suspended ceilings
- Category II lighting
- Fully redecorated
- WCs with separate shower facilities
- Car parking ratio 1:260 sq ft

Misrepresentation Act: The particulars are not to be considered a formal offer, they are for information only and give a general idea of the property. They are not to be taken as forming part of a resulting contract nor be relied upon as statements or representations of fact. Whilst every care is taken in their preparation no liability can be accepted for their accuracy. Intending purchasers must satisfy themselves by personal inspection or otherwise as to the correctness of these particulars which are issued on the understanding that all negotiations are conducted through Pearce & Co. and/or De Souza. January 2009

phileggerdon@pearceco.co.uk paulf@desouza.co.uk

