

## Inbucon House, Wick Road, Egham TW20 0HR



### First floor Offices in Idyllic Business Park Environment To Let

---

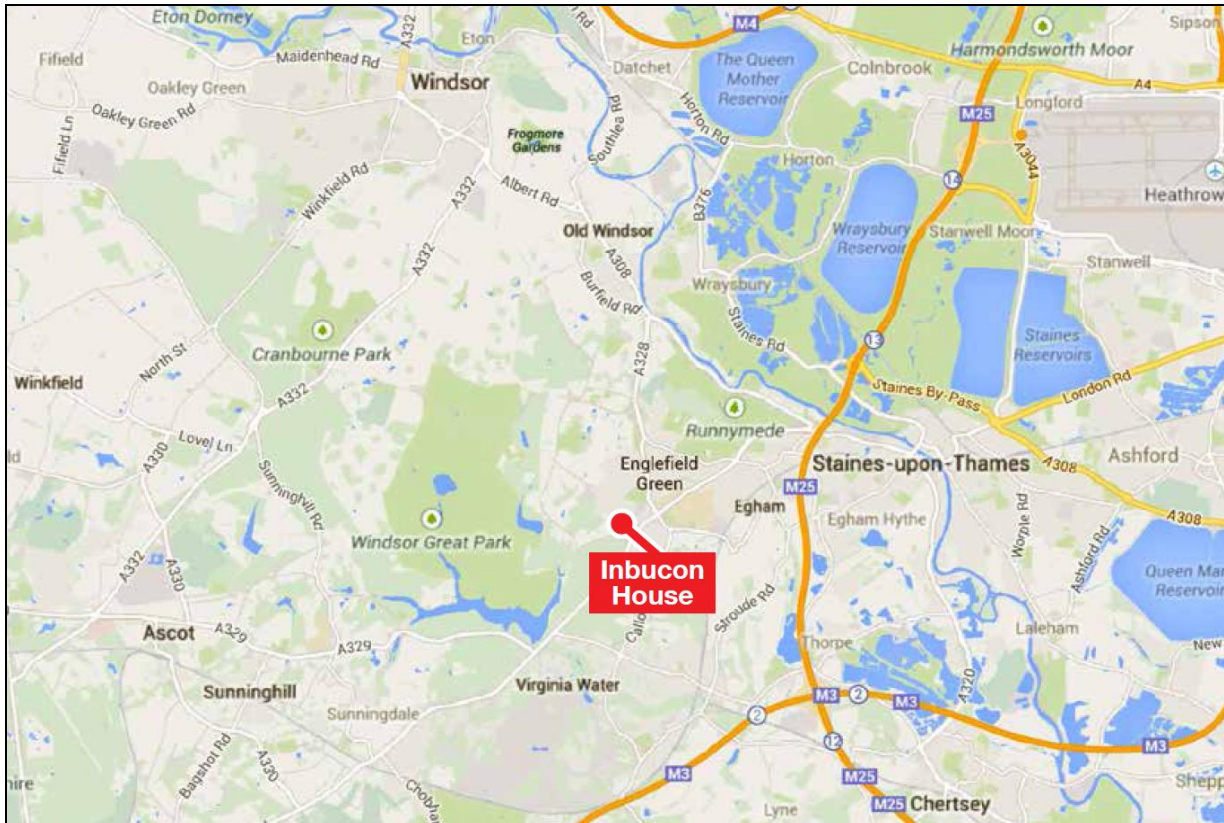
7,380 sq ft (685 sq m)

- Excellent on site car parking (44 spaces – 1:168 sq ft)
- Character building
- Attractive rural setting just off A30
- 2.5 miles from M25 (J13)
- Walking distance of Savill Gardens and Virginia Water

**Tel: 020 8707 3030**

**[www.desouza.co.uk](http://www.desouza.co.uk)**

**Heathrow Office: 3 Maple Grove Business Centre, Lawrence Road, Hounslow TW4 6DR**

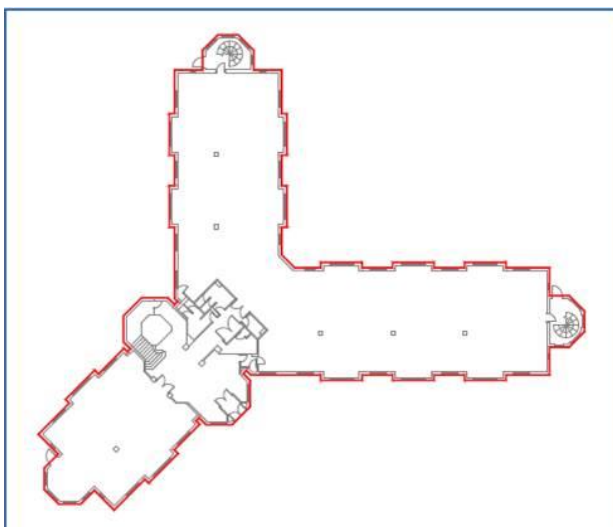


## Location

Inbucon House is in an attractive rural setting close to the Royal Parks and within walking distance of Virginia Waters and Savill Gardens. The building offers modern office accommodation with excellent parking in a secluded environment. The estate's setting coupled with easy access to the M25 has attracted global companies such as OKI, Intersoft and Zayo.

## Description

Inbucon House comprises a modern 2 storey office building arranged as three wings with a central core. It benefits from air-conditioning, raised floors and an 8 person passenger lift. The entire first floor office area is available extending to 7,380 sq ft (685 sq m).



## Rent

On application

## Contact

**Paul Flannery**

T: 020 8707 3035

M: 07946 422920

E: paulf@desouza.co.uk