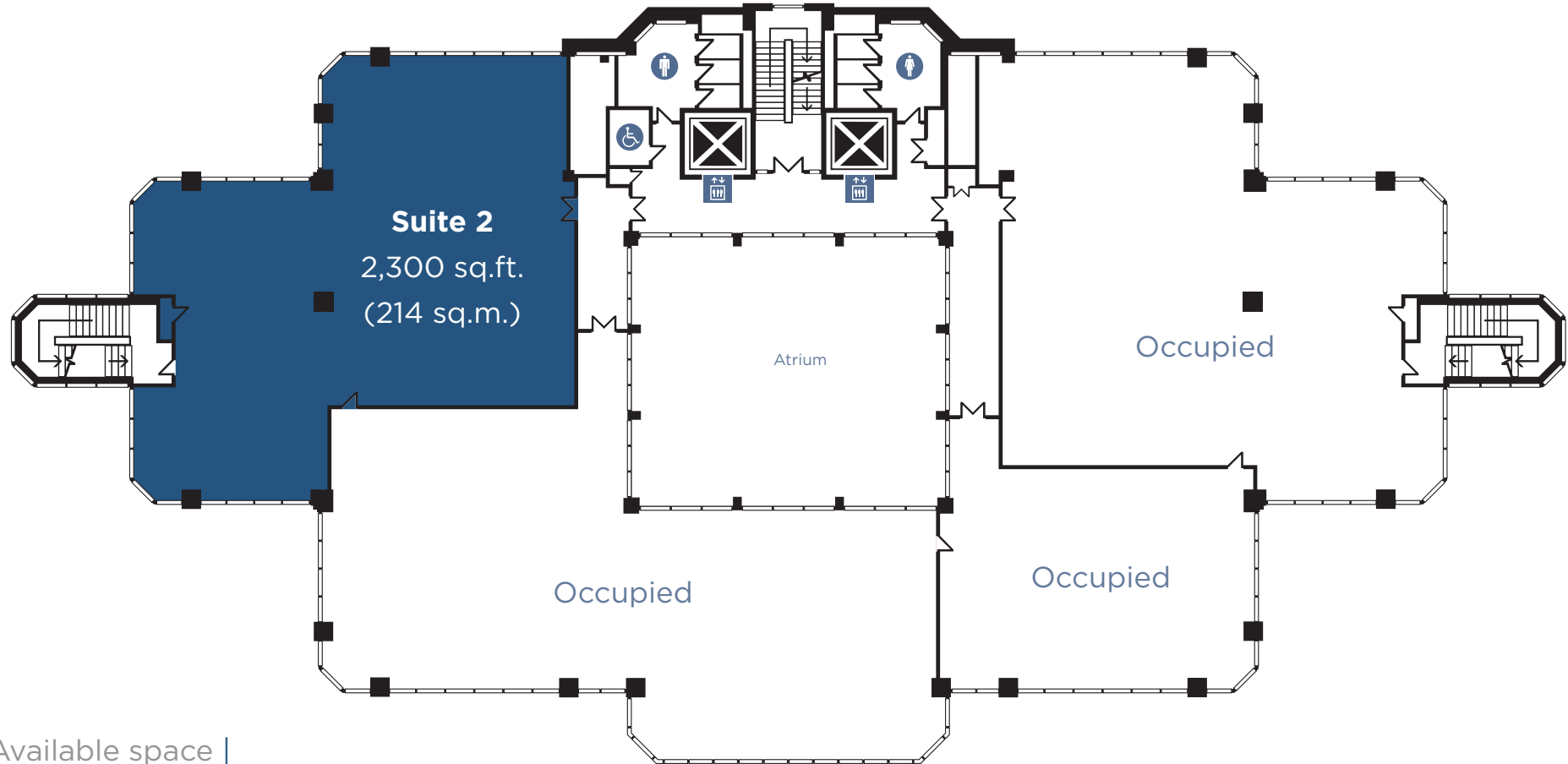


Part second | floor



Available space |

Suite 2 | 2,300 sq.ft. (214 sq.m.)

Specification |

- Fully air-conditioned
- Full height atrium reception area
- Accessible raised floors (250mm)
- Suspended ceilings
- Excellent natural light throughout
- Floor to ceiling height of 2.65m
- Two 13-person lifts
- Car parking - 6 spaces
- Cycle parking
- 24/7 access
- CCTV and pass-controlled entry system
- Building manager
- Shower facilities

profilewest^o

b r e n t f o r d | w e s t l o n d o n
www.profilewest.co.uk



Further information

For further information please contact the letting agents or the Developer, Orbit Southern.



j.vokins@vokins.co.uk
p.hasmasan@vokins.co.uk



paulf@desouza.co.uk

Orbit
Southern

A MEMBER OF THE EMERSON GROUP
020 8750 1410
www.orbitsouthern.com

orbit-southern@emerson.co.uk

DISCLAIMER: These Particulars are believed to be correct at time of going to Press, but the Developer reserves the right to change the scheme in the future. However, the Vendors / Lessors and Agents of this property give notice that : (1) These Particulars are intended as a general outline only, for the guidance of prospective purchasers or tenants, and do not constitute the whole or any part of an offer or contract. (2) They cannot guarantee the accuracy of any description, dimension or other details contained in these Particulars and prospective purchasers or tenants should not rely on them as statements of fact or representation, but must satisfy themselves as to the accuracy of such details. (3) No employee of the Agents has any authority to make or give any representation or warranty, or enter into any contract whatsoever in relation to the property. (4) Prices and rents quoted in these Particulars may be subject to VAT in addition, Aug 2019.